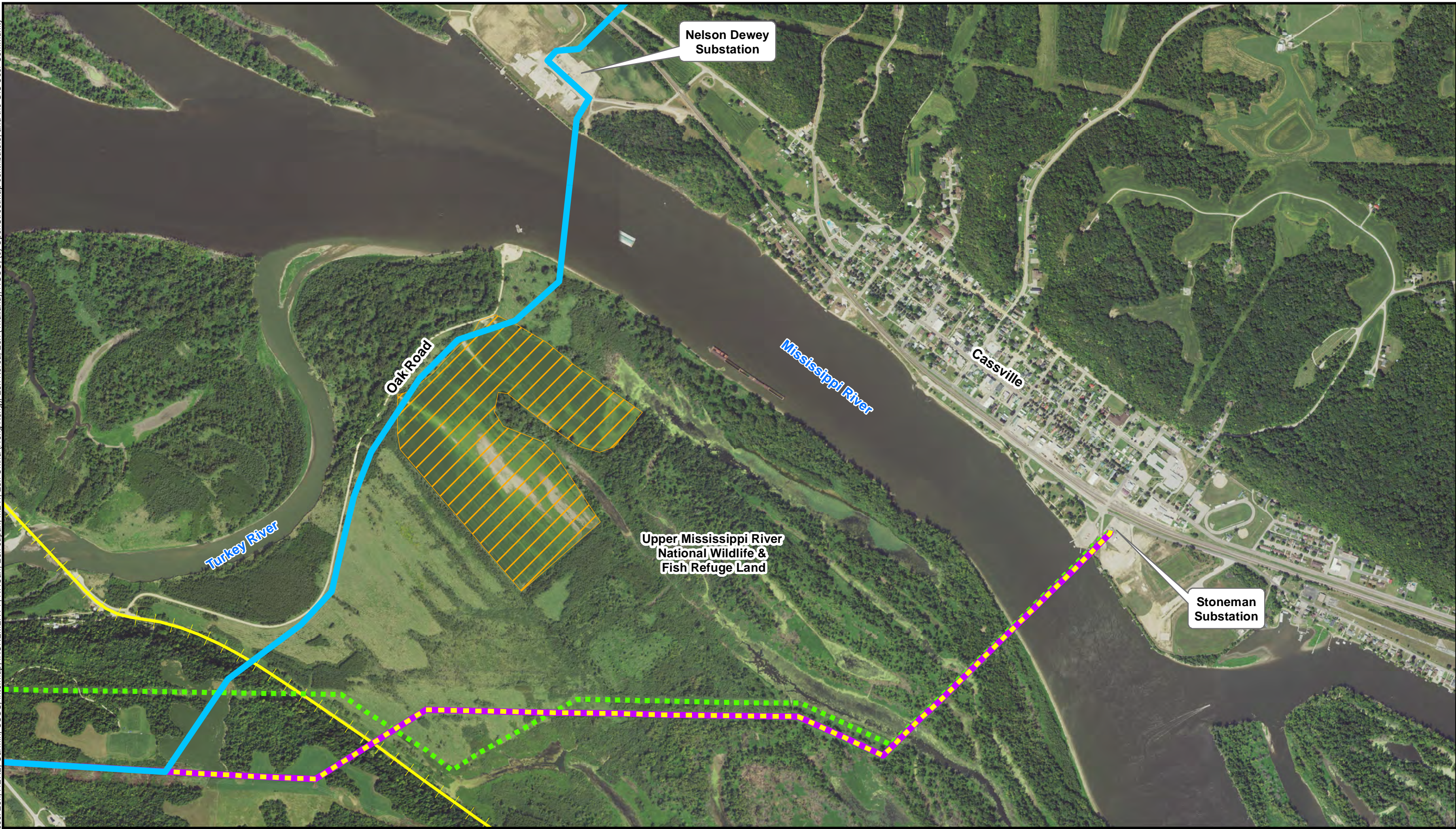


Service Layer Credits: Sources: Esri, HERE, Garmin, USGS, Intermap, INCREMENT P, NRCan, Esri Japan, METI, Esri China (Hong Kong), Esri Korea, Esri (Thailand), NGCC, (c) OpenStreetMap contributors, and the GIS User Community



Nelson Dewey Substation

Cassville

Stoneman Substation

Oak Road

Turkey River

Mississippi River

Upper Mississippi River National Wildlife & Fish Refuge Land



0 500 1,000 Feet

- Proposed Cardinal - Hickory Creek Line Route
- Existing ITC Stoneman 161-kV Line (To Be Relocated)
- Existing Dairyland N9 69-kV Line (To Be Retired)

- Non-Refuge Farm Land
- Railroad



Cardinal to Hickory Creek Transmission Line Iowa Segment 2 Crossing USFWS Refuge & USACE Land